

SIX SENSES
RESIDENCES

THE PALM, DUBAI

Exclusive Collection

SIX SENSES RESIDENCES

THE PALM, DUBAI

KULM

EXCLUSIVE PROPERTIES

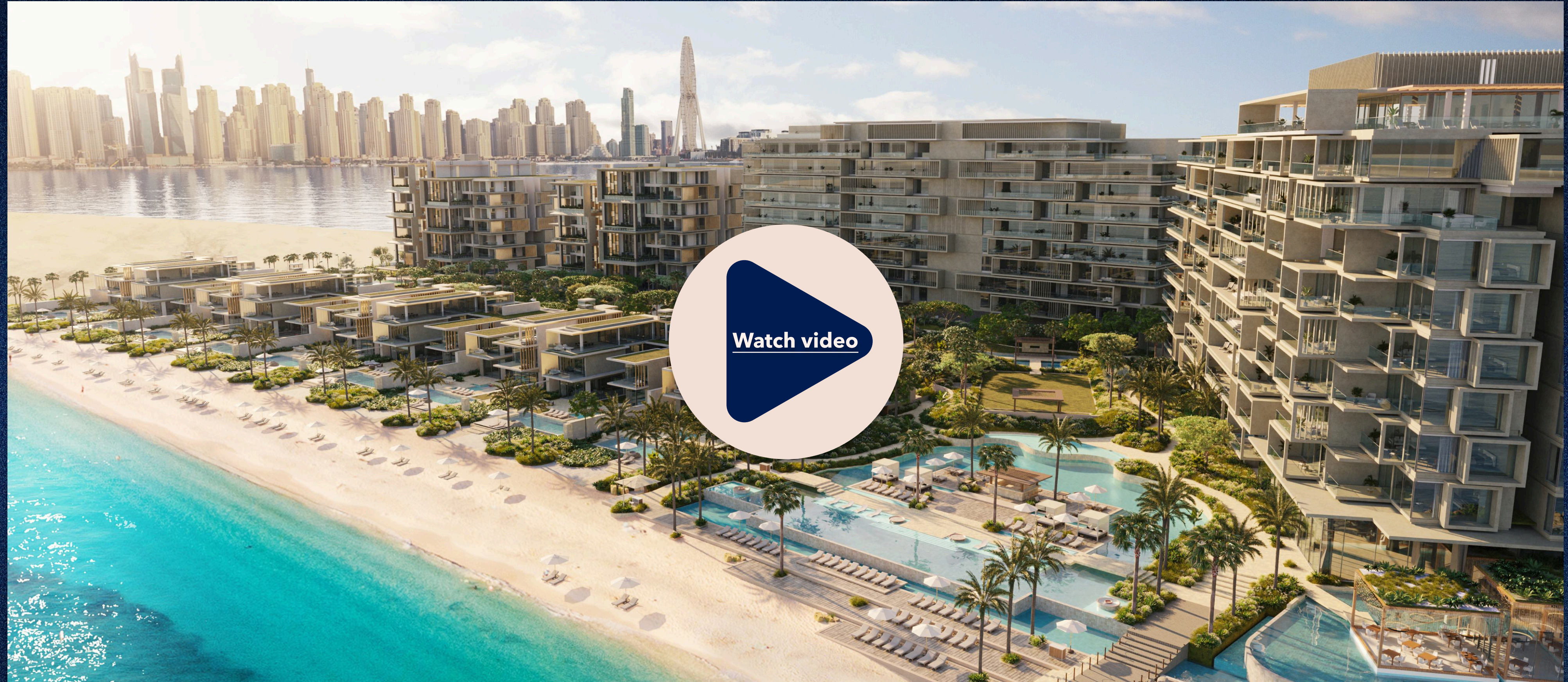
A WORLD OF WELLNESS & LIFESTYLE

At the core of the Six Senses Residences The Palm, Dubai is a 60,000 square foot wellness and lifestyle facility, Six Senses Place, providing residential owners with a new dimension in community living.

A unique space that adopts the Six Senses belief that wellness is anything and everything that results in mental, physical, spiritual and emotional happiness.

Residential owners and guests can benefit from its array of wellness and lifestyle facilities, including a massage circuit pool, squash court, wellness circuit, Six Senses Spa, shared working space, meeting rooms, to name a few.

K U L M
EXCLUSIVE PROPERTIES



KULM
EXCLUSIVE PROPERTIES

THE UAE'S FIRST SIX SENSES RESIDENCES

Standing elegantly on the West Crescent, Six Senses Residences The Palm, Dubai epitomises innovative architecture. It takes its cues from the city's journey while paying homage to the contours and elevations of the region's landscape, its unique heritage and origins, and its unquenchable thirst for progress.

KULM
EXCLUSIVE PROPERTIES

THE PALM JUMEIRAH

A place where the sea romances the sky
on an iconic stretch of land that
has ignited the world's imagination
with its endless arc of seascape and skyline.

KULM
EXCLUSIVE PROPERTIES

CRAFTING A SECURE TOMORROW SINCE 2002

Select Group is a multidisciplinary group with real estate and property development at its core, setting industry standards since its inception in 2002. Today, it is one of the region's largest privately-owned real estate developers with a highly experienced and committed workforce.

Select Group's projects comprise award-winning residential, commercial, hospitality, retail and mixed-use developments. The group boasts 20 million square feet of development, with a combined Gross Development Value (GDV) in excess of AED 22 billion. A total of 7,000 homes have been delivered, accounting for over 13.5 million square feet of Built Up Area (BUA), with a further 6.5 million square feet at various stages of development.

Through astute financial planning, technical expertise and strong asset management, the group is committed to identifying, executing and delivering real estate projects that generate maximum return for all stakeholders.

With diversification being a key component of its DNA, Select Group is engaged in both real estate and direct investments, while its reach goes well beyond the UAE, extending into Croatia, Germany and the UK. Passive investment doesn't have a place at Select Group – as it is actively involved in the day-to-day control of assets to not only grow its portfolio, but also improve its performance.

Partnering with world-renowned brands like InterContinental, Radisson Blu, Jumeirah™ Group, Ibis, Meliá Hotels International and Niu Air Hospitality reflects the hospitality division's continuous quest for quality.

The group's direct investment interests extend further into the realms of leisure, health and fitness, and digital technology. With expertise in development, redevelopment, regeneration and investment, Select Group is focused on a value investing approach and works with the best in the industry – whether that's suppliers, partners or employees – for unparalleled results.

EXCLUSIVE BENEFITS

Owner Benefits

- Private and destination dining
- 10% savings on food and beverage
- 10% savings on hotel, spa and food and beverage voucher program
- Complimentary access and membership to Six Senses Place
- 10% savings on spa treatments
- Complimentary gym membership
- Complimentary gym membership
- Organic garden produce available to purchase
- Six Senses bottled water in residences
- Buggy drop off and luggage delivery
- Concierge and business centre essentials

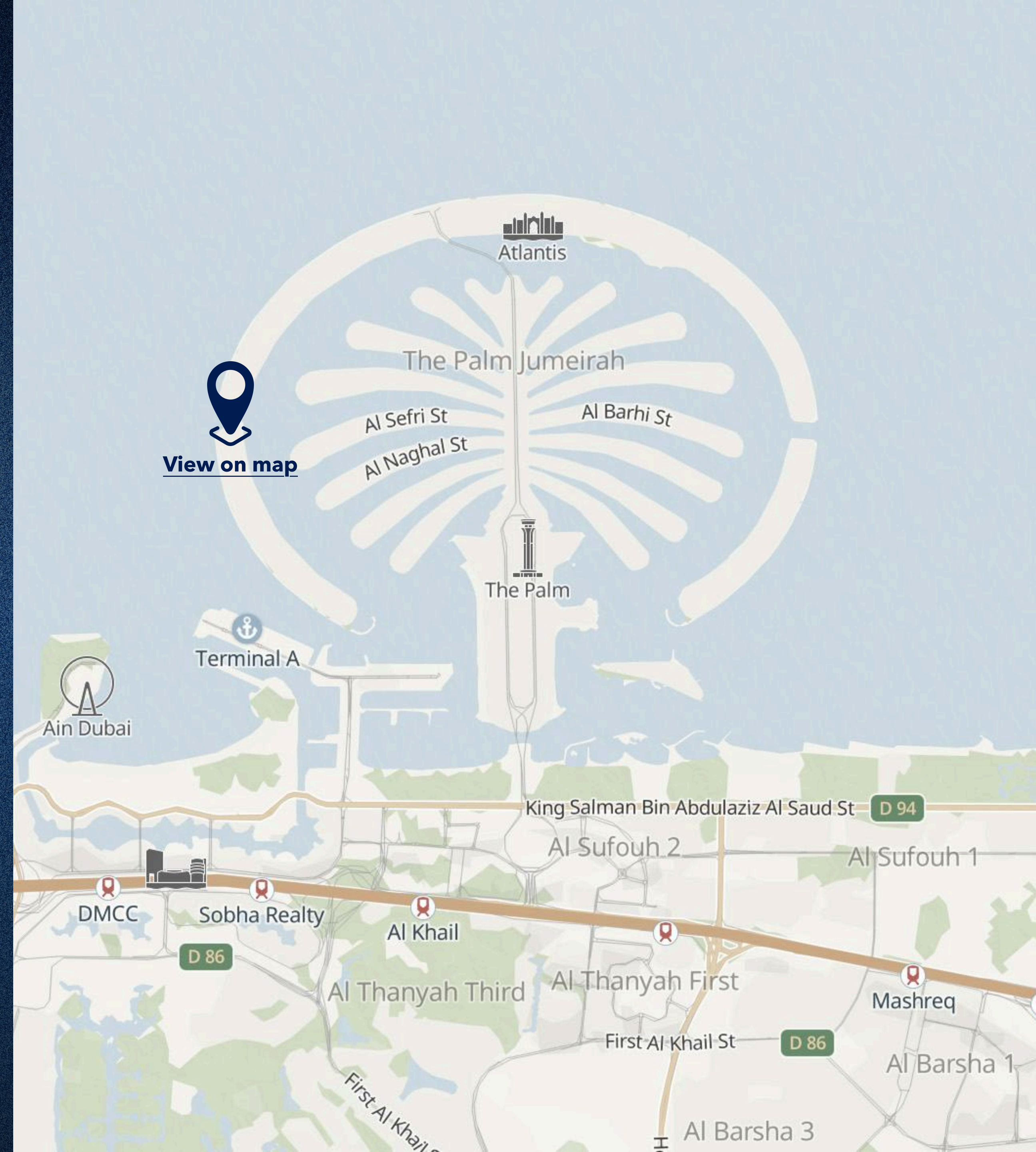
A La Carte Services

- Daily servicing
- Departure clean
- Residential laundry for bedding and towels
- Concierge and business centre services
- Transfer/ transportation services
- Butler services
- Grocery services
- Nanny/babysitting services
- Nurse consultation
- Personal trainer
- Tennis courts
- Watersports activities
- IT services
- Private lawn and in-residence plant care
- Six Senses amenities and daily/weekly refresh

LOCATION:

On the iconic Palm Jumeirah, Six Senses Residences offers panoramic views of the Arabian Gulf and Dubai skyline, direct beach access, and a vibrant luxury lifestyle.

KULM
EXCLUSIVE PROPERTIES



3-BEDROOM CORNER PENTHOUSE

380 sqm (approx. 4,090 sqft)

35,820,000 AED

K U L M
EXCLUSIVE PROPERTIES





Description: Exclusive corner penthouse on the 6th floor, featuring two terraces, maid's room, and private office.

Bedrooms: 3

View: Dual Sea & Palm

KULM
EXCLUSIVE PROPERTIES

3-Bedroom Corner Penthouse



KULM
EXCLUSIVE PROPERTIES

4-BEDROOM APARTMENT

Size: 4,567 sqft (approx. 424 sqm)

33,500,000 AED

K U L M
EXCLUSIVE PROPERTIES





Description: Elegant 4-bedroom apartment with anticipated handover in Q2 2025.

Bedrooms: 4

View: Full Palm

K U L M
EXCLUSIVE PROPERTIES

FLOOR PLAN



4-BEDROOM APARTMENT

Size: 4,588 sqft (approx. 426 sqm)

40,000,000 AED

K U L M
EXCLUSIVE PROPERTIES





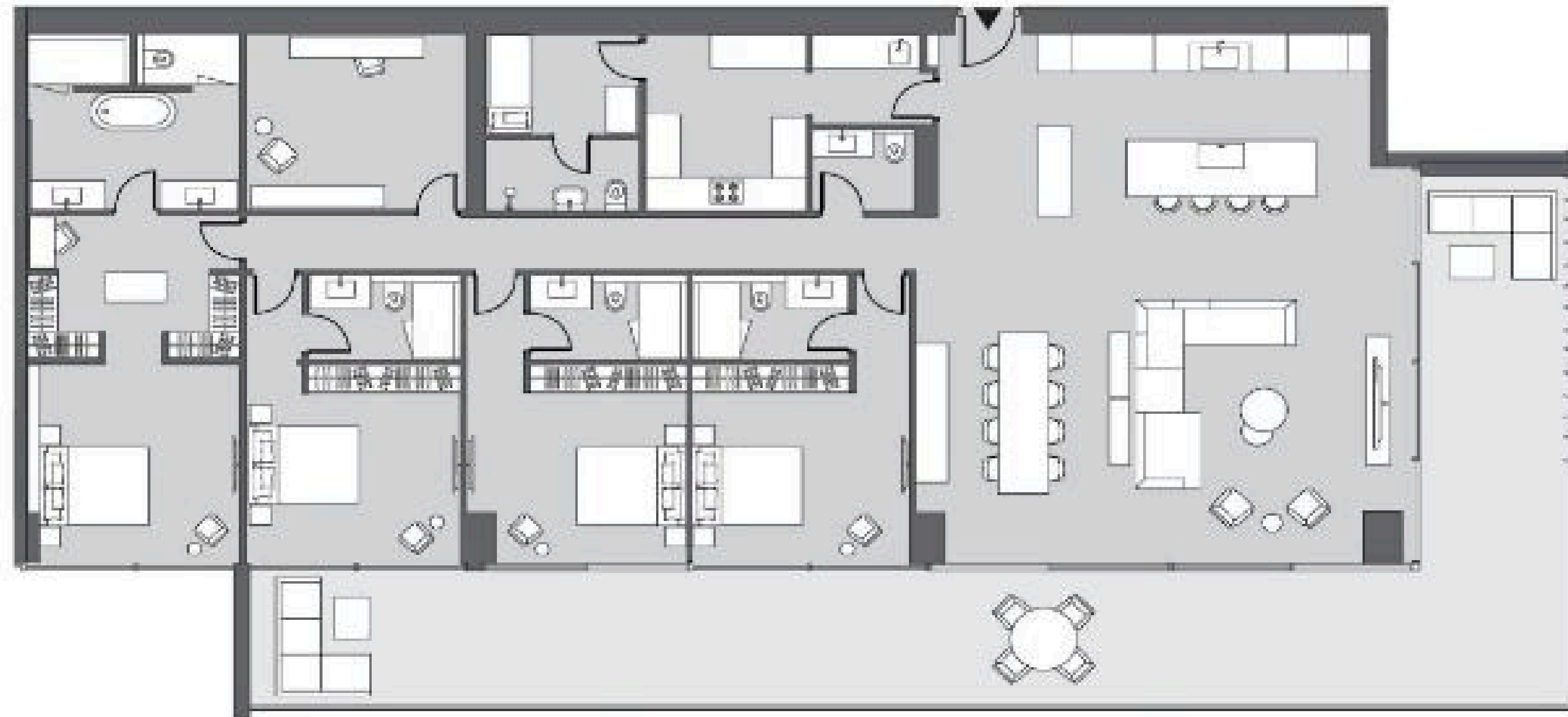
Description: One of the finest four-bedroom residences in the building, located on the 7th floor.

Bedrooms: 4

View: Full Sea

KULM
EXCLUSIVE PROPERTIES

FLOOR PLAN



3 BEDROOM SKY VILLA

Size: 600.18 sqm (approx. 6,460 sqft)

41,909,500 AED

K U L M
EXCLUSIVE PROPERTIES





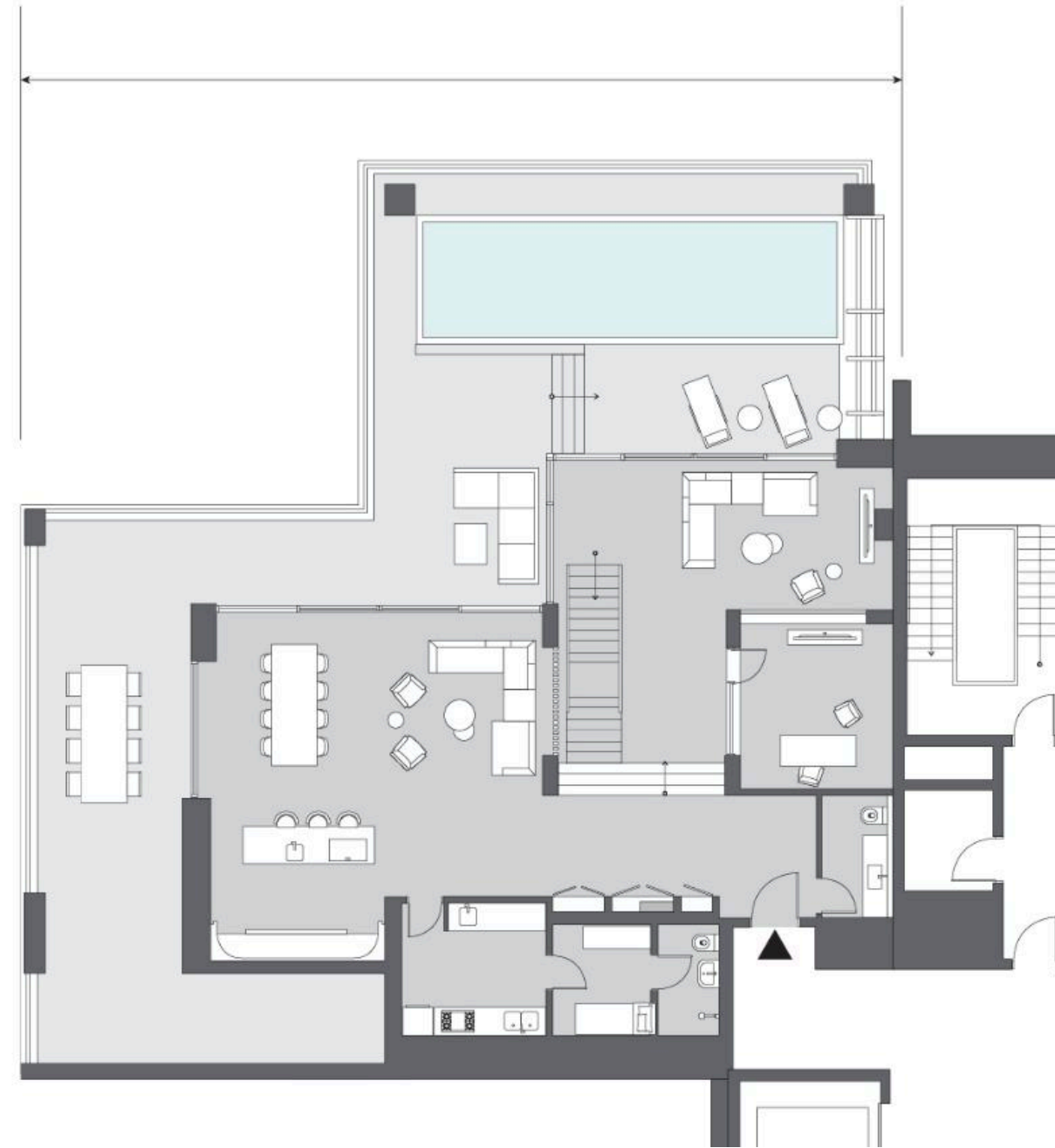
Description: Exclusive three-bedroom Sky Villa with a private pool, offering the ultimate blend of villa living and elevated views.

Bedrooms: 3

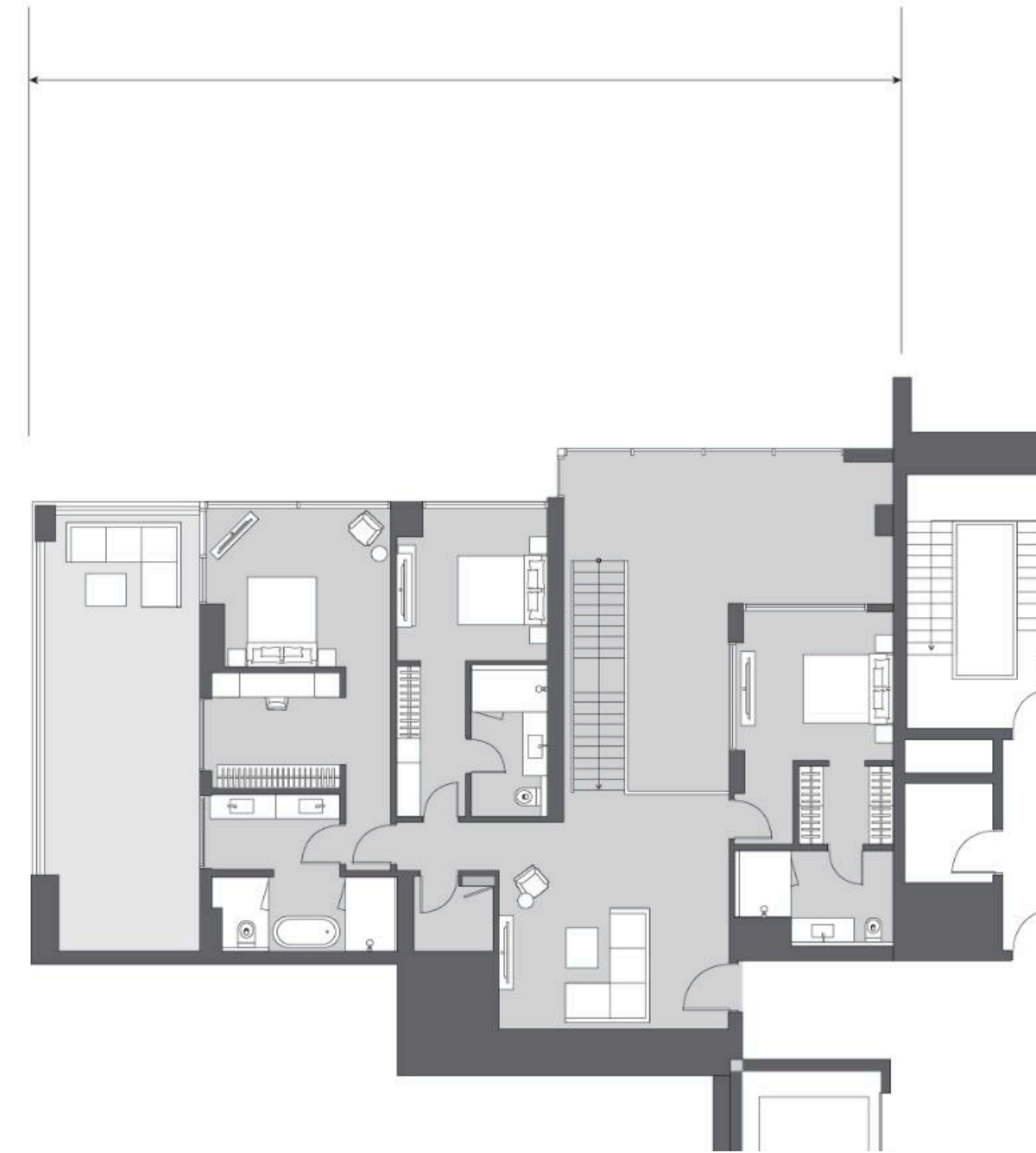
View: Sea & Palm

K U L M
EXCLUSIVE PROPERTIES

FLOOR PLAN



First floor



Second floor

4-BEDROOM ROYAL DUPLEX

WITH ROOFTOP POOL

Size: 1,000 sqm (approx. 10,764 sqft)

133,100,000 AED

K U L M
EXCLUSIVE PROPERTIES





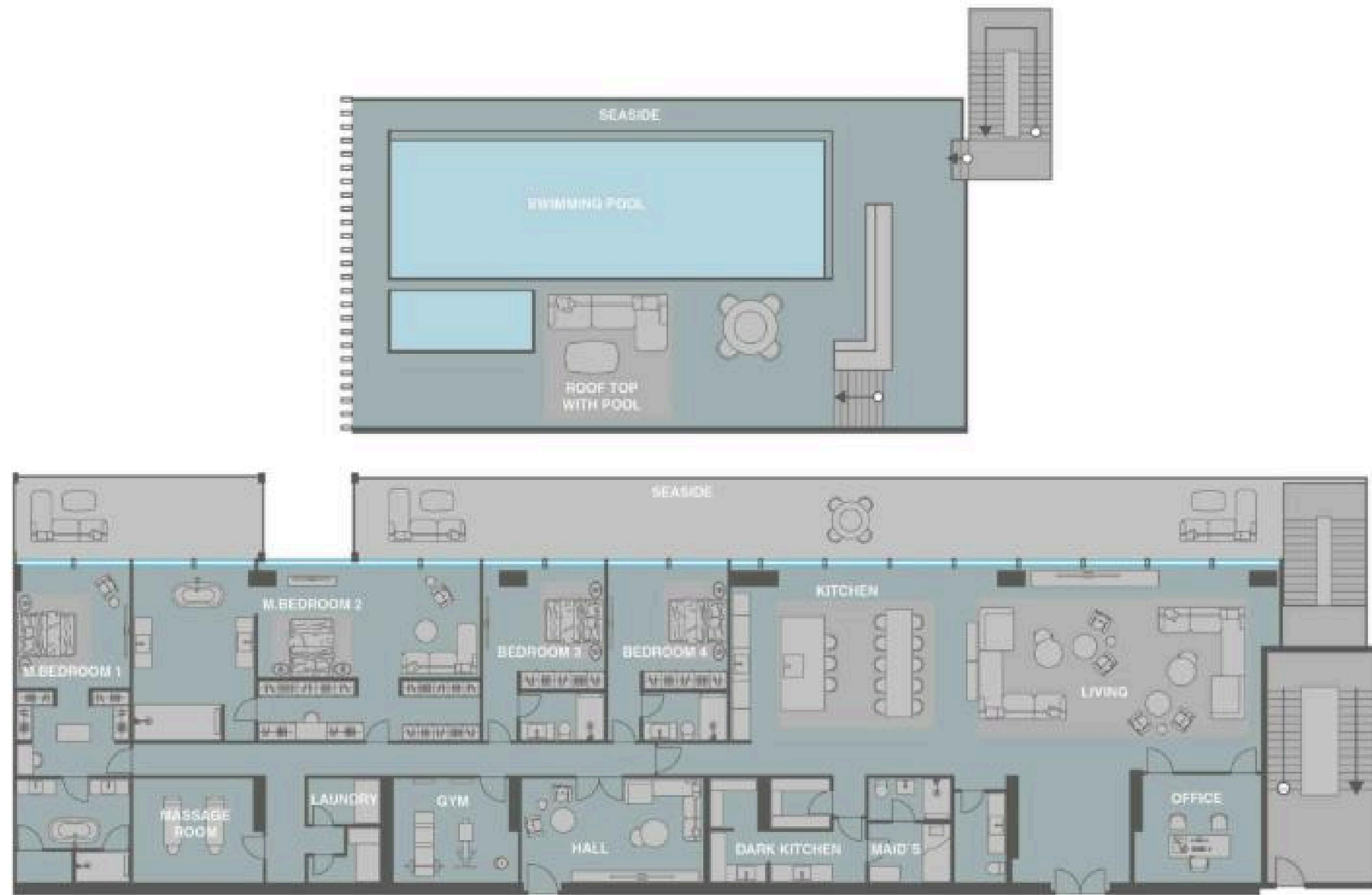
Description: Prestigious royal duplex penthouse occupying the entire top floor, complete with a private rooftop pool.

Bedrooms: 4

View: Full Sea, Sunset & Ain Dubai

KULM
EXCLUSIVE PROPERTIES

FLOOR PLAN



4-Bedroom Royal Duplex with Rooftop Pool

KULM
EXCLUSIVE PROPERTIES

5-BEDROOM SERVICED BEACH VILLA

Size: 2,463 sqm (approx. 26,514 sqft)

204,820,000 AED

K U L M
EXCLUSIVE PROPERTIES





Description: Ultra-luxury beachfront villa with direct private beach access, four parking spaces, maid's and driver's quarters, and a private gym.

Bedrooms: 5

View: Direct Beachfront

K U L M
EXCLUSIVE PROPERTIES



5-Bedroom Serviced Beach Villa

KULM
EXCLUSIVE PROPERTIES